

An aerial photograph of a city, likely New York City, showing a dense residential area in the foreground, a winding river (the Hudson River) in the middle ground, and a city skyline with several skyscrapers in the background. The image is overlaid with a teal and orange gradient shape that curves across the top and left sides.

Xylem: From Source-to-Tap-to-Source

SUSTAINABILITY. RESILIENCE. AFFORDABILITY

A close-up photograph of a hand cupping water. The hand is positioned in the lower half of the frame, with water being poured into it from above. The water is captured in mid-air, creating a series of droplets and splashes. The background is a soft, out-of-focus green, suggesting a natural setting like a forest or garden. The lighting is bright, highlighting the texture of the skin and the clarity of the water.

Water

Essential to Life.



As the world's leading global water technology company, Xylem has a unique opportunity and responsibility to solve water and smart infrastructure challenges.

2021 Revenue \$5.2B

Employees ~17,000

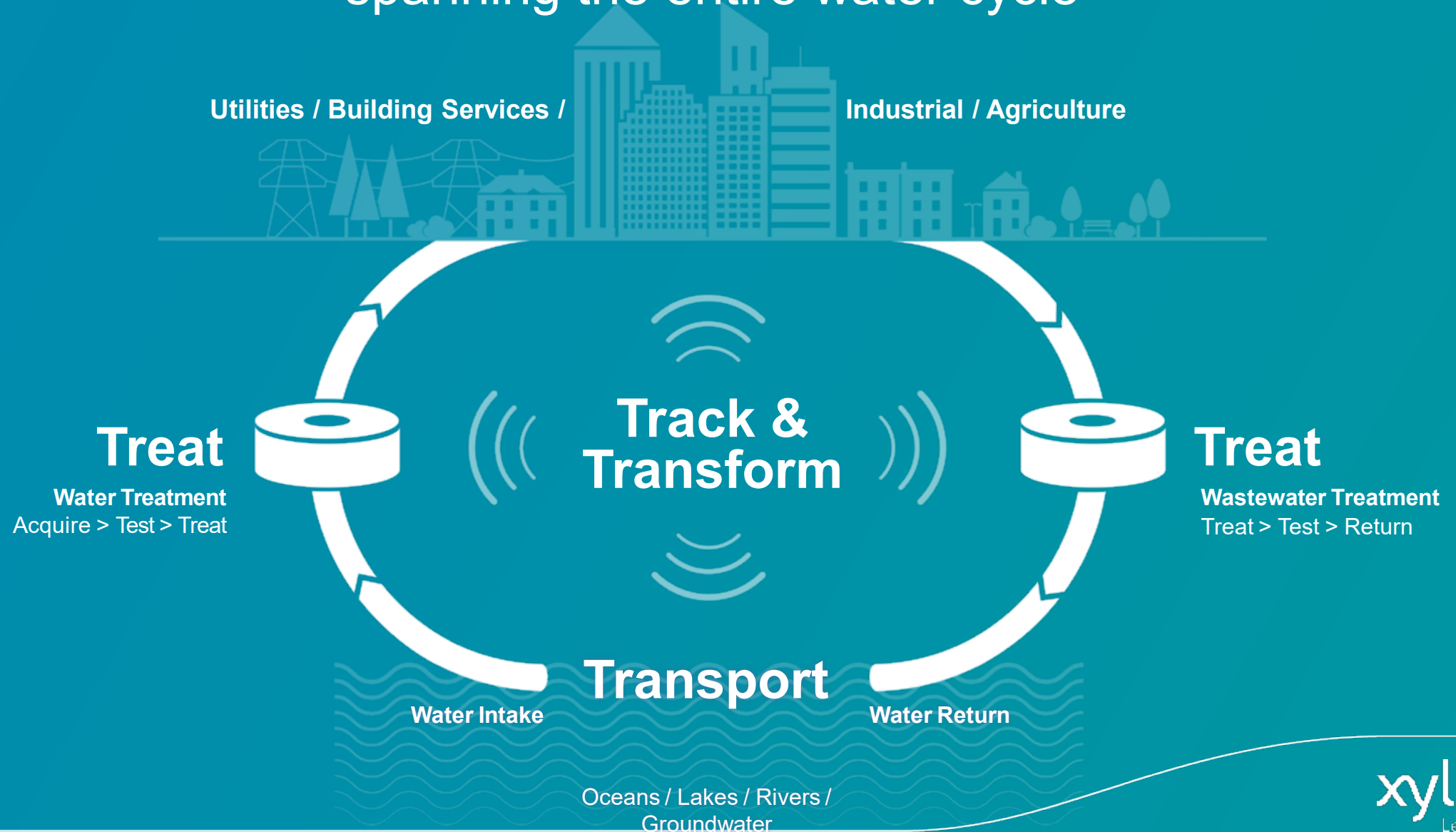
Countries ~150

Continents 7



Water Technology Company

spanning the entire water cycle



From intake to effluent, we can help

Xylem delivers holistic impact to the entire water cycle.

WATER TREATMENT PLANTS

Make better decisions in real-time and reduce risks of unplanned incidents

WATER DISTRIBUTION SYSTEMS

Manage real losses and gain real-time operational awareness

METERING AND REVENUE

Ensure financial resiliency to keep revenue flowing

COLLECTION SYSTEMS

Detect blocks and forecast flows, prioritize capital improvement plan to ensure reliability and best value for investments

WASTEWATER TREATMENT PLANTS

Reduce costs by maximizing energy and chemical consumption while increasing margins of compliance

WASTEWATER ASSETS

Coordinated control of pump stations, lift stations, tanks, tunnels, high-rate treatment; manage water capacity in real-time leading to optimized capex spend



Xylem Brands

Analytical Instruments

AANDERAA

BS Bellingham + Stanley

-ebro-

Global Water

mjk

O-I Analytical

SI Analytics

WTW

SonTek

YSI

TIDELAND

Applied Water Systems

AC FIRE PUMP

Bell & Gossett

Standard Xchange

GOULDS WATER TECHNOLOGY

LOWARA

Specialty Flow Control

JABSCO

rule

FLOJET

Transport

FLYGT

Smart Solutions

SENSUS
a xylem brand

visenti
a xylem brand

pure
TECHNOLOGIES

emnet

HYPACK

VALOR WATER ANALYTICS

Treatment

FLYGT

SANITAIRE

WEDECO

LEOPOLD

Dewatering

godwin

FLYGT

Xylem Turkey

Xylem is expanding its organization in Turkey

At the end of 2021, Xylem acquired Anadolu Flygt. The company has been operating since 1991.



TOGETHER WE CAN
SOLVE THE WORLD'S WATER
CHALLENGES

Local facilities to serve you better and faster

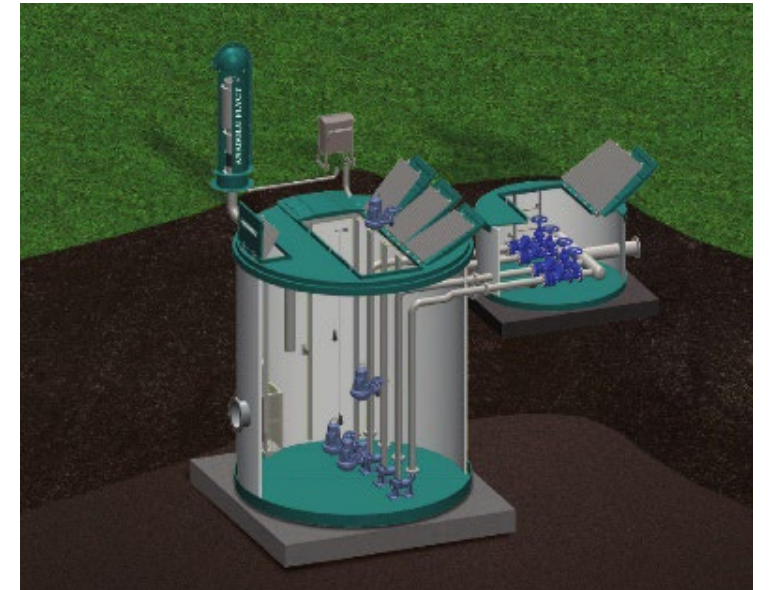


Head Office, Istanbul
Branch Office, Ankara
Manufacturing Plant, Kocaeli

Many equipments, blowers and pumping stations used for various purposes in treatment plants are produced

Public Utility Transport: PPS Prefabricated Pumping Stations

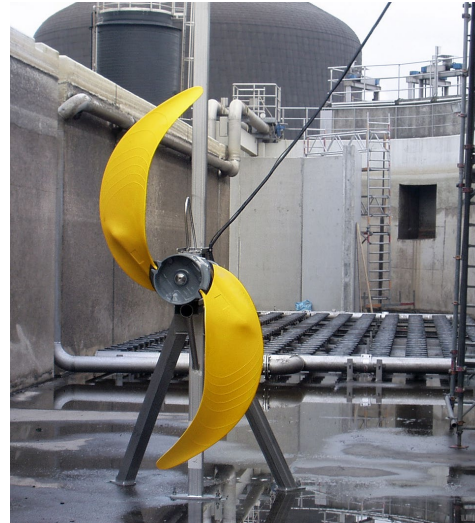
- PPS registered trademark
- Range of 1m-4m diameter and up to 13m depth
- Chamber is made of GRP (and optionally from PE) material
- Inner piping is made of 304 (and optionally from 316) SS
- Optional components;
 - ✓ basket screen,
 - ✓ penstock,
 - ✓ maintenance platform,
 - ✓ ladder,
 - ✓ external valve chamber,
 - ✓ forced ventilation with an activated carbon filter, etc.
- PPS stations can be sold with pumps, panels, shipping, installation and commissioning services.



Public Utility Treatment: Wastewater Plants

- Municipal Wastewater Treatment Plants
- Industrial Wastewater Treatment Plants
- Packaged Wastewater Treatment Plants
- Drinking Water Treatment Plants
- Reuse Treatment Plants
- Biogas Power Plants

- Submersible Pumps
- Centrifugal Water Pumps
- Submersible Mixers
- UV Disinfection Systems
- Ozone Disinfection Systems
- Aeration Systems
- Roots Blowers
- Turbo Blowers
- Progressive cavity pumps & Munchers



The Needs & The Answers

Global Non-Revenue-Water Estimates

Current Estimated Figures*:

- 126 Billion m³/year;
- On average 70% of NRW are Real Losses;
- 77 Litres per Capita per Day;
- \$39 Billion per Year.

Carbon Dioxide (CO₂):

- 187.2 million metric tons CO₂ / year;
- 0.6% of global CO₂ emissions;
- Comparison:
 - Aviation: 1.9% & Shipping 1.7%.
- To offset current carbon emissions due to real losses, 218.4Ha of trees need to be planted = ¼ size of Brazil....



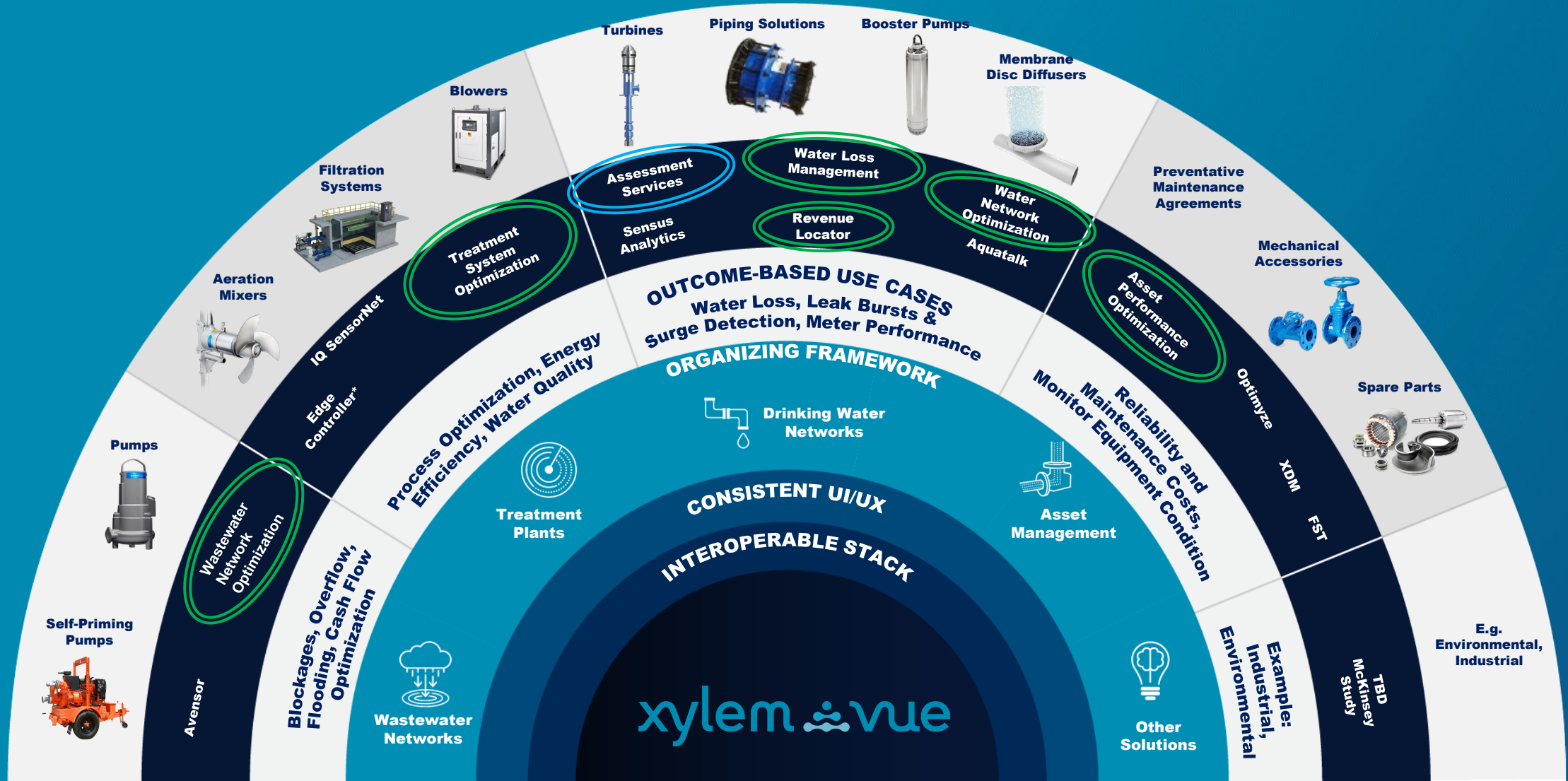
*Source R. Liemberger & A. Wyatt

Utility Operation & Maintenance Challenges

- Transmission or Distribution mains?
- Leave alone, Repair or Replace?
- Real or Apparent Losses as main issue?
- Replace customer meters, but which ones?
- Any harmful transients being generated?
- How can I reduce sewer overflows?
- How do I reduce treatment plant power consumption?
- CAPEX & OPEX planning.
- How to make **Informed Engineering Decisions**?



An Enterprise-wide Solution Ecosystem



Products

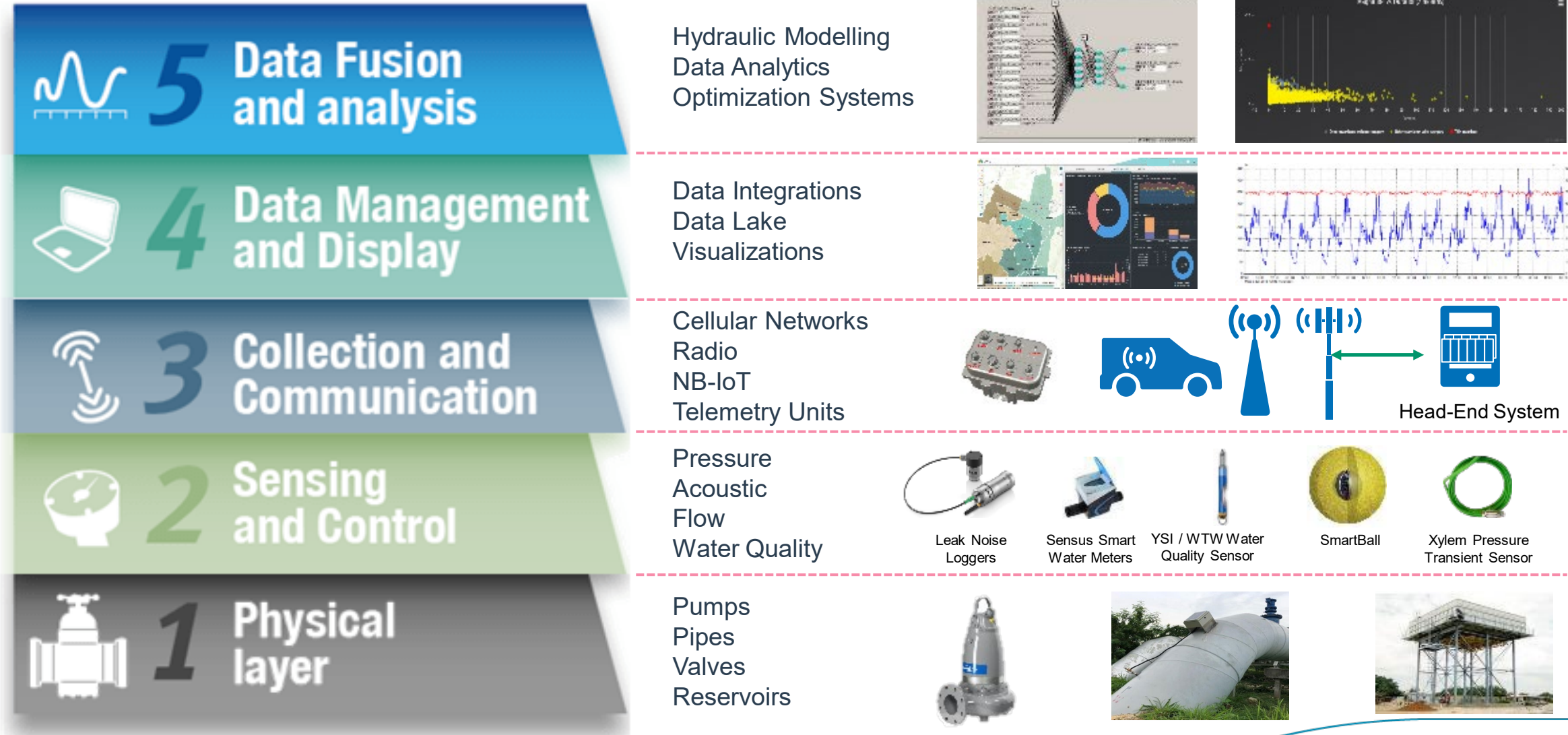
Digital Solutions

Use Cases

Organizing Categories

Not Exhaustive

Data: The Starting Point

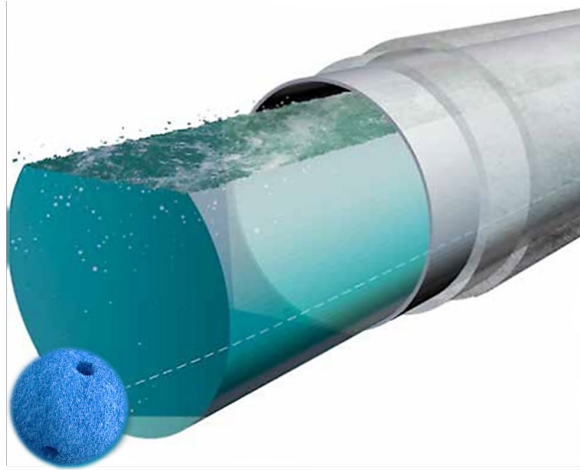


Source: Smart Water Networks Forum (SWAN)

Assessment Services

Water and Wastewater Pipeline Leak Detection and Condition Assessment Services

SmartBall



- Free-swimming tool;
- Ideal for long pipe sections up to 30km per day;
- Over 8,000km inspected.

Sahara



- Tethered tool;
- CCTV (Internal)/ leak survey and pipe alignment verification;
- Up to 1.9 km per run;
- Over 6,000km inspected.

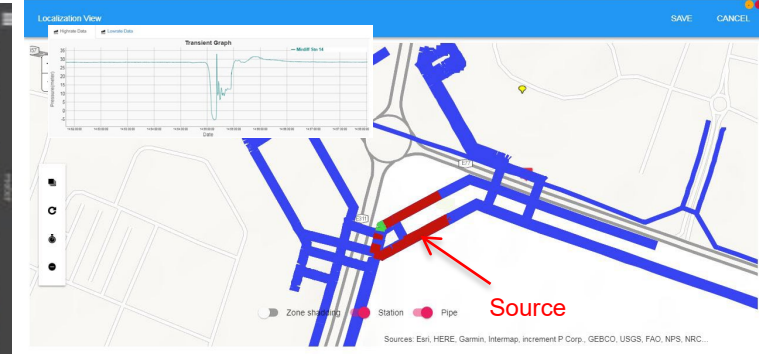
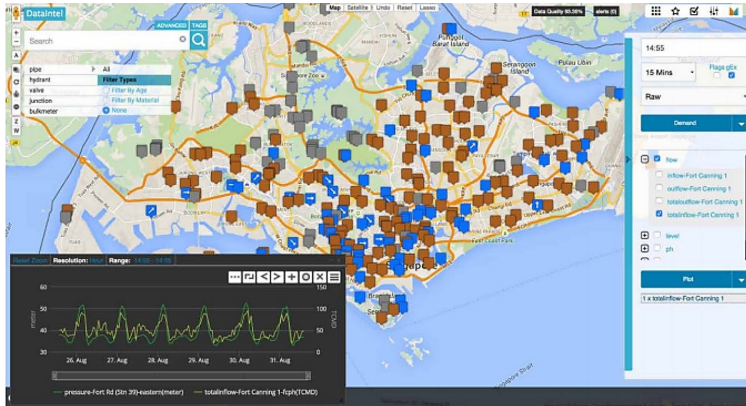
PipeDiver



- Free-swimming tool;
- Corrosion detection on metallic mains;
- Broken wires on pre-stressed pipes.
- Over 2,000km inspected.

Water Loss Management

Water Network Monitoring and Analytics



- Platform to integrate all of client's database and sensors;
- Network performance monitoring & analytics;
- Customizable dashboards and reports.
- Pipe burst/leak detection & localization via pressure transient sensors & acoustic hydrophone units.
- Pressure transient source location;
- Identification of network points under stress due to transients.

Revenue Locator

Water Loss and Billing Analytics and Optimization

Boost Utility revenues through the following Analytics Software:

CUTOFF ANALYZER™



Predictive analytics for current and potential non-paying utility customers

HIDDEN REVENUE LOCATOR™



Identify customer data handling and metering inaccuracies in the system

S.M.A.R.T. TARGETS FOR CONSERVATION™



Customer usage analytics to aid utilities on their water conservation targets

WATER RATE SIMULATOR™



Impact assessment of new rate structures before implementation

CUSTOMER LEAKS™



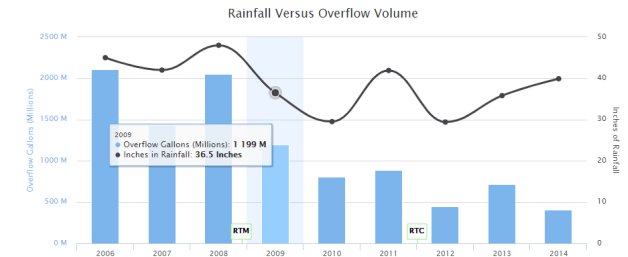
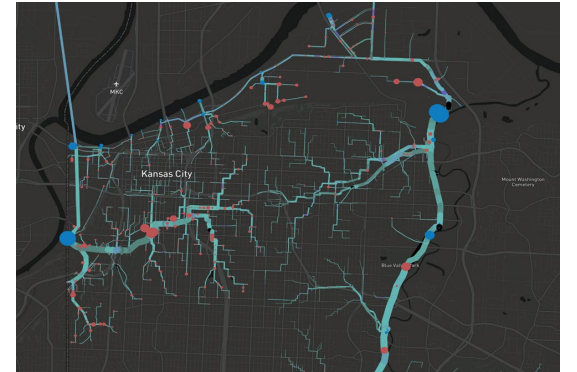
Detection and alerting for customer-side leakage

WasteWater Network Optimisation

Storm and Wastewater Network Monitoring and Analytics



- Custom Real-time Monitoring System with the latest sensor and communication technologies
- Analytics derived from real-time hydraulic and hydrologic models to help utilities in decision making
- Real-time Control Optimization of the collection system
- Leads to significant deferment / cancellation of capital expenditure



Treatment System Optimisation (TSO)

Wastewater Treatment Plant Optimisation

Act: Optimize

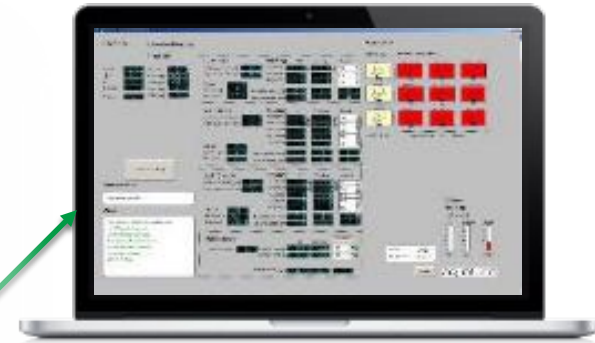
- Run 1000s of scenarios
- Reduce energy/chemicals
- Automatic/guidance mode
- Increase compliance margin

Predict: Create Digital Copy

- Assimilate last 12-36 months of history
- Run real time models
- Recalibrate model on demand

Sense: Turn On the Lights™

- Data Collection
- Real Time Alerts
- Full SCADA Integration



Turkiye Case Study

Turkiye SmartBall Case Study

Ankara Municipality in 2011:

- Ividik-T17 Güzergahı:
- Uzunluğu:14.5 km;
- Çapı: 2200 mm;
- Malzeme: Beton;
- Tip: ÖGBB;
- Kapasitesi: 360000 m³/gün.



Survey Results:

Leak Positions From Insertion

1: 2,688m	2: 4,101m	3: 4,721m	4: 6,577m	5: 6,607m
6: 7,057m	7: 8,651m	8: 9,102m	9: 9,416m	10: 11,423m

Conclusion

Key Take Aways



Actionable Data



Informed Engineering Decisions



Harness Power of Decision Intelligence Solutions



Where



What



When



**OPPORTUNITY
OF A LIFETIME**